

The Railyard Local

Volume 9, Issue 7

-The Monthly Newsletter of the Danbury Railway Museum-

September-October 2010

Galleria Layout Has New Life

By Wade Roese, DRM Vice-President

In mid-June 1994 the newly formed Danbury Railway Museum embarked on its first venture into model railroading. The railyard was not yet fenced in and member meetings on Wednesday evenings from 7:00 to 9:00pm were taking place in a temporary facility on Ives Street in Danbury.



THE DANBURY RAILWAY MUSEUM offers a special thanks to its talented craftsmen for creating this beautiful Christmas display:

Ken Altberg
Paul Gassner
Gerry Herrmann
John Ivancso
Ray Juskiewicz
Stan Madyda
Dave McKee
Al Mion
Tom Morris
Howard Peatfield
Ira Pollack
Fred Pollard
Neil Shively
Jim Thorne

The top photo is of the layout surrounding the Christmas tree at the Galleria in 1994. The one on the left shows a plaque acknowledging the DRM participants in this holiday model railroading project. All photos featured in this article of the layout in 1994 and of the plaques were taken by DRM member and original participant Gerry Herrmann.

Continued on Page 4

Museum Hours Change

Beginning on Labor Day and continuing to before Memorial Day of next year, the Museum will be open Wednesday through Saturday 10-4pm, and Sunday 12-4pm. It will be closed on Monday and Tuesday of each week. Hours may be different for special events, so be sure to call the Museum or check our website concerning those occasions.

In This Issue

- ~ Ten Years Ago - Page 2
- ~ Grant from Amherst for RDC - Page 2
- ~ Gift shop News - Page 6
- ~ Halloween Pumpkins, Decorations, Special Activities at DRM - Page 7
- Plus . . . New Members

Presenting LEGO Winners

Gussed closest to 256,378 blocks used

Winners of the LEGO contest and their families were invited to join us on Danbury Railway Day. Wade Roese presented them with the LEGO kits which were the prizes for guessing the closest to the number of LEGO blocks used in the layout. Only those



creating the layout knew the actual number. There



were 275 submissions to the contest which was held for the duration of the special LEGO layout display earlier this year at the Museum. It was very helpful that most of the contestants indicated how they heard of the DRM. The photo above shows Wade and Eric; at left, Connor receiving his prize.

New Members

We are delighted to welcome our new members this month. All members, as well as the general public, are welcome to attend the weekly meetings and free programs held Wednesdays, 7:30pm, at the Museum, 120 White Street, Danbury. We invite all members to become involved in Museum activities as soon as possible!

Our Membership Chairman requests that all those renewing their membership **PLEASE return the paperwork with your check.**

Leslie Lacroce	Danbury, CT
Karin Soule	Kent, CT
Michele DeSalvo	Danbury, CT
Eric T. Wiberg	Norwalk, CT
Kathy Horvath	Bethel, CT
Steven Pennella	Norwalk, CT
Sheila Rice	Newtown, CT
Thomas J. Risi	Bronx, NY
Joe Zaconi	Darien, CT
Bruce Ebersman	Dunstable, MA
Zandra Cheng	Newtown, CT
Rachel Katz	Forest Hills, NY
Christopher Keenan	New Fairfield, CT
Sabine Dartnell	Greenwich, CT
Laurence Karrass	Brooklyn, NY
Doug O'Grady	Danbury, CT

Grant from Amherst for RDC

Thanks to Amherst Railway Society and the members of the DRM's Grants Committee (Steve Gould, Mike Salata, and Jerry Lawlor) we have received a generous grant of \$3000 for making engine repairs on our #32 RDC Budd car. In past years the DRM has been a very grateful recipient of immensely helpful grants from Amherst.

Amherst Railway Society holds a huge railroad hobby show annually on the last full weekend in January at the Eastern States Exposition ("Big E") in West Springfield, MA. This coming year it will be on Saturday, January 29th 9-5 & Sunday, January 30th 10-5. Daily admission will be \$10 for adults, with children 15 and under free when accompanied by a paying adult. Once again it will be featured in four buildings of the complex. The DRM will have a booth there, and many of our members will be attending the show, along with about 20,000 other people!

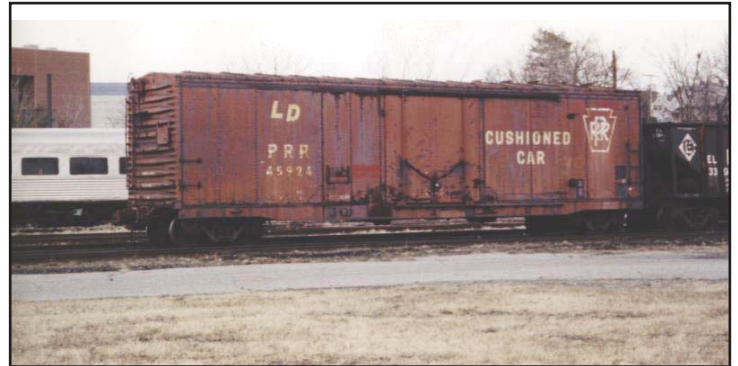
Amherst Railway Society members do a great job of hosting this show, and use proceeds from this tremendous event to fund grants.

2

Ten Years Ago

By Stan Madyda

Editor's Note: The newsletter from ten years ago combined the months of September, October, and November. Therefore Stan sought out and found the following photographs from approximately ten years ago among the DRM Reference and Research Library's collection.



All photos on this page by Bob Westerfield. Pennsylvania boxcar #45924 in Danbury yard 1997. This boxcar was later positioned by the concrete platform and today serves as the carpenter shop.



U.S. Army GP-20 and ex-CN FP-4 in Danbury May 1999.



Peter McLachlan and Christen Russo operating a borrowed handcar in April 1999.

Continued on Page 3



All photos on this page by Bob Westerfield. "Celebrate the Century" postal train baggage car in Danbury yard September 2000.

"Celebrate the Century" Post Office Train, former Southern Railway RPO in Danbury September 2000.



"Celebrate the Century" ex-Lehigh Valley "Kitchi Gammi" club car in Danbury yard for the event.

Galleria Layout Has New Life, Continued from Page 1

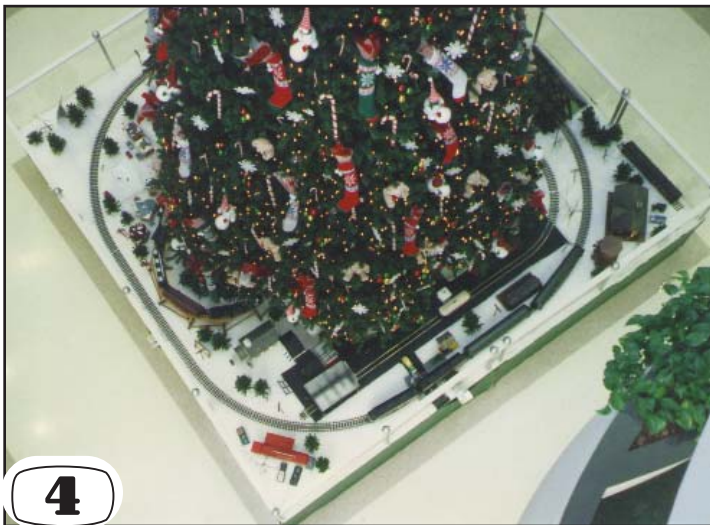
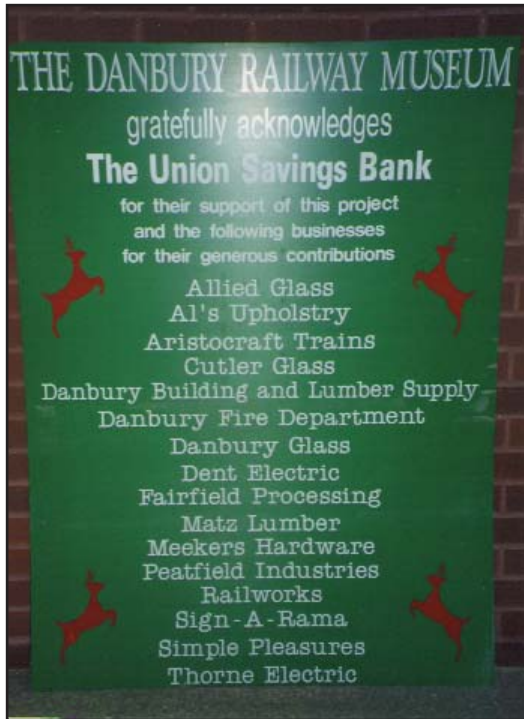
Restoration and planning on our future home was underway. The city government, local businesses, civic leaders, friends and railroad advocates grouped together for our new venture.

Tom Morris and Al Mion took on a new project as project coordinators to help expose the DRM to the Danbury public. A letter to Mr. Lewis Polk of Polk's Hobbies (Aristo-Craft) in New York and New Jersey requested assistance in the way of donations to support the newly conceived first DRM model railroad project.

A four-story office building, 225 Main Street, Danbury was to be home of the first DRM outreach project. Union Savings Bank, under the leadership of Mr. Chick Froch, CEO, was to sponsor a 14'x16' G-gauge model railroad layout around a 25' tall Christmas tree. Two operating loops, a cable tram up to a second-floor balcony, member constructed buildings, donated buildings, bridges, and scenery provided attractive and interesting displays. A local merchant, Mary Cappiello, who owned Simple Pleasures, a gift and novelty store, loaned many buildings and accessory enhancements to further spice up the layout. The "Galleria Display", as this exhibit would come to be known, ran 7 days a week from Thanksgiving to New Year's for over 8 years.

Sponsored by Union Savings Bank and facilitated by Gerry Herrmann, Ken Altberg, Paul Gassner, John Ivansco, Ray Juskiewicz, Stan Madyda, Dave McKee, Al Mion, Tom Morris, Howard Peatfield, Ira Pollack, Fred Pollard, Neil Shively, Jim Thorne and others, the Galleria display was a DRM holiday project and flourished

Continued on Page 5





until bank leadership changed. The remaining G-gauge equipment was donated by the bank to the DRM and placed into storage.

Through the years numerous individuals have donated G-gauge equipment to the Museum: individual collections, individual pieces, buildings, locomotives, freight cars, passenger cars, accessories and parts. Kellogg Hardwoods of Bethel, CT donated the large operational G-gauge logging layout which has a home in the east end of our main hall. The New York Botanical Garden and Paul Busse donated tracks, operating equipment and live plantings which helped the DRM establish a 20' by 60' garden layout outside.

Fast forward to 2010. Recently we completed a 10'x12' storage and operating shed adjacent to our exterior garden railroad setup. Our many G-gauge donations have now been consolidated in the shed and will have been displayed and operated on Danbury Railway Day, August 14, 2010. Many of the original Galleria pieces will be brought out to see new life in their new home on the DRM Garden Railroad.



Current photos of some of the G-scale structures which were part of the Galleria layout, and which will at times be brought out for display on the DRM's new outdoor layout.



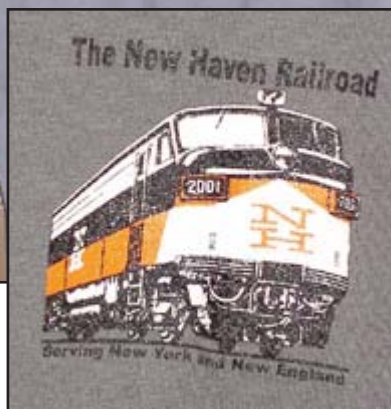
Gift Shop News

By Patty Osmer

We have several new items in stock: a new hat, a new t-shirt, and a new item for the older kids. DRM members receive 10% off on Gift Shop purchases.

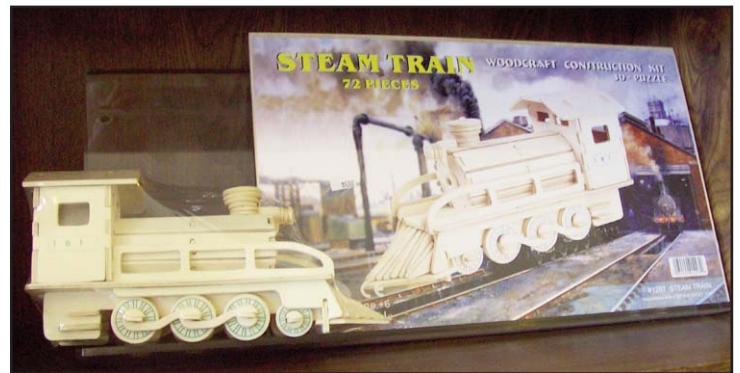
NEW CLOTHING:

From our friends Visuals at Work, who create the great New Haven apparel, come a new cap and a t-shirt, both in great slate-grey color and sporting an FL-9. The embroidered cap is \$18.90 for members; the screen-printed tee is \$16.20.



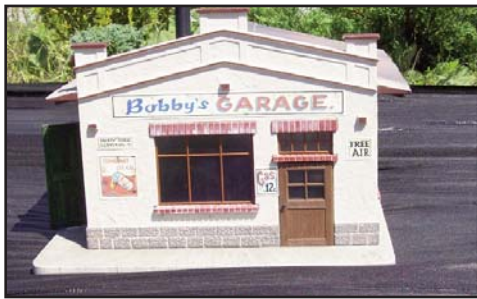
NEW FOR THE OLDER KIDS:

We are excited to have found these 3-D wooden train puzzles! These high grade 3mm wood puzzles come individually shrink-wrapped with instructions & sandpaper included. Pop out the pieces and go! Painted or left as natural wood, it is a challenging, educational and creative activity! We carry both a Steam Locomotive for age 6+ with 72 pieces for \$6.50, and a Train puzzle with 233 pieces for age 8+ for \$15.00. Again, members receive 10% off.



Galleria Layout Has New Life, Continued from Page 5

A few of the original Galleria layout modelers have left, but thankfully more have continued their support of G-gauge at the DRM. Thanks go to Paul Gassner, Gerry Herrmann, John Ivansco, Stan Madyda, Dave McKee and Ira Pollack, all of whom were part of the original Galleria "14". Thanks also to the many new members who have helped with our G-gauge. With the help of our young members, G-gauge will continue to entertain our guests. Thanks, Joseph.



Halloween Pumpkins, Decorations, Special Activities at DRM

Ride the train to our Pumpkin Patch! We'll be here with pumpkins, cider, cookies, festive decorations, special activity stations and all our year-round attractions to greet you. Thrill to a ride on our historic turntable, and tour the Fairgrounds Pumphouse as well as full sized vintage railroad equipment. Enjoy running several scales of model railroad layouts. The event will be held Saturdays October 16, 23, 30 from 10-4pm, and Sundays October 17, 24, and 31 from noon-4pm. Trains will run hourly on Saturdays 10:30-3:30pm and Sundays 12:30-3:30pm. We encourage children to come in costume. Admission will be \$9 for ages 2 and over; under 2 free. The train ride, refreshments, special activities, and picking of one pumpkin for each child 12 & under, are included in the admission cost.

If you will be able to assist in any way for any of the days of this very popular event, please contact Sue Teer at 203-778-8337. This annual festive occasion is a delight for volunteers as well as guests.



PO Box 90, DANBURY, CT 06813
Address Correction Requested

NONPROFIT ORGANIZATION
U.S. POSTAGE PAID
DANBURY, CT
PERMIT NO. 569

MUSEUM CALENDAR

Sept	22(7:30pm)	T.B.A. - Bob Gambling
Sept	29(7:30pm)	The FL-9 Story - Dan Foley
Oct	6(7:30pm)	Electric Locos - Carl Liba
Oct	13(7:30pm)	Pre-Amtrak - Pete McLachlan
Oct	20(7:30pm)	Video; Hudson River Railroads - DRM Library
Oct	21(7:00pm)	Board Meeting - Open to Members
Oct	27(7:30pm)	Program to be announced
Nov	3(7:30pm)	GN Empire Builder - Carl Liba

Museum hours: Wed-Sat 10-4pm; Sun 12-4pm
See the newsletter in color at www.danburyrail.org!



Contact Information

Please contact us with submissions:
Mail: The Danbury Railway Museum
Attention: Newsletter
PO Box 90, Danbury, CT 06813
Phone: 203.778.8337
Fax: 203.778.1836
Email: drmnewslettereditor@gmail.com
Editor: Carolyn Taylor
Printing by: Infinity Printing of Danbury

Change of Address

If you move, please send your change of address to:
Danbury Railway Museum,
Attention: Membership Chairman
PO Box 90, Danbury, CT 06813
Via Email to drmmembers@aol.com

