

# The Railyard Local

Volume 11, Issue 5

-The Monthly Newsletter of the Danbury Railway Museum-

June-July 2012

## National Train Day at DRM

Complete with all the bells and whistles!

Our volunteers did their best to make this the most successful National Train Day at the DRM, and succeeded in that goal. Almost 200 guests attended this year's event on May 12<sup>th</sup>. It was well organized both before and during the occasion, with more demonstrations, information sessions, and special sights to see. Train rides were free with paid admissions.



*Continued on Page 3*

## Danbury Railway Day

Member picnic to follow on August 11<sup>th</sup>

One of the highlights of the DRM's summer activities is Danbury Railway Day. We traditionally plan special activities for both adults and children. Just as with our National Train Day celebration, each year we add more to the list of demonstrations and activities. Come see what we have to offer this year! The Museum has several pieces of equipment under restoration, so this would be a great opportunity to view the status of work on the CN caboose, 1455 steam locomotive, Rutland flatcar, Tonawanda Valley coach, NYCHRR wooden caboose and others.

If you are a DRM member, we hope you will join us for the Member Picnic immediately following the event. It worked out well last year to begin the chances to be "engineer" on a locomotive under supervision immediately after the last train ride of the event. The picnic is well known for the delicious and varied selection of food provided. If you plan to attend please make reservations by August 5<sup>th</sup>. We ask for a \$5.00 donation to help defray costs. Many times members will bring salads, deserts, etc. in addition. Please let us know ahead if you will be bringing something.

## In This Issue

- ~ More Railroad Terms and Sayings - Page 2
- ~ Ten Years Ago - Page 2
- ~ Words from Our President - Page 3
- ~ Outreach Program Prompts Group Tour- Page 6
- ~ Trackwork Day on April 28<sup>th</sup> - Page 7

## Outreach Program in Bethel

### The Electrification of the Danbury Branch

By Stan Madyda

For the past couple of months, Gerry Herrmann, Peter McLachlan and Stan Madyda have been working on a Power Point presentation on the electrification of the branch. A number of years ago, Jack Swanberg had arranged for a donation from the widow of Harry Brown of negatives and photos taken by him. He was the engineer involved with the project. The Library later had prints made. Gerry came up with the idea of making a Power Point presentation to be shown at the annual meeting of the Bethel Historical Society on May 6, 2012. While the crowd was not as large as we had hoped, the presentation was enjoyed by those in attendance.

Since we had everything in place, we approached the SoNo Tower Museum, offering to show it whenever they had an opening for their monthly meeting. As it turned out, they had nothing for May 19<sup>th</sup> so Gerry and Stan joined them for that evening. Since we were showing this to railroad enthusiasts, some things were pointed out that we missed when we were originally putting the program together. We will be making copies of some of the negatives for their collection.

**Look for the show to be presented at the DRM on Wednesday, August 1<sup>st</sup> at 7:30pm!**



Photo of electrification from DRM Library's collection.

---

## New Members

We are delighted to welcome our new members this month. All members, as well as the general public, are welcome to attend the weekly meetings and free programs held Wednesdays, 7:30pm, at the Museum, 120 White Street, Danbury. We invite all members to become involved in Museum activities as soon as possible!

**Have you noticed?** The address label on each newsletter indicates the expiration date of your membership. (If you have very recently renewed your membership the new date may not be reflected yet on the label). The membership of Life Members does not have an expiration date.

James Bender	Bridgeport, CT
Trina Padilla	New Fairfield, CT
Thomas Alexander Lenhart	Milford, CT

---

## Item Needed:

**VHS rewriter, new or used.** Please drop off at the DRM Front Desk if you have one to donate. Thanks!

---

## More Railroad Terms and Sayings

DRM Secretary Steve Gould has responded to our appeal for more of the above with several to add to the list:

1. "The real McCoy" An invention in the steam locomotive era was called the McCoy Automatic Lubricator which would allow the lubrication of an engine while in motion. A number of knock-off devices came out that were inferior to "the real McCoy", which now is used to refer to the genuine article.
2. "That train has left the station." I used to hear this at management conferences referring to someone who was too late with an idea or didn't get something done on time.
3. "The train left ten minutes off the advertised." This means the train left 10 minutes late vs. the timetable departure time.
4. "Green Board" or "Red Board" meaning a green or red signal.
5. Some railroads had interesting nicknames: The Erie Railroad was the "Weary Erie"; the NY, Susquehanna & Western was the "Susie-Q" or the "Squeak" the Erie Lackawanna was the "Erie Lack of Cash"; the Lehigh Valley as "The Leaky Valley"; the LIRR as the "Lousy and Inefficient Rail Road".

2

---

## Ten Years Ago

By Stan Madyda

Over the years, the Danbury Railway Museum has had tour groups visit. One such visit was taken at the end of April 2002 by the New York Transit Museum when they made their fourth trip to the Museum. Leaving Grand Central Terminal, they traveled to South Norwalk where Gerry Herrmann and I met them for the trip up the Danbury Branch. We had prepared information packets which they received prior to the trip. One of the cars of the shuttle was reserved for them and we were able to give them a narrative about the branch. Upon arrival in Danbury, they toured the station and rode the Budd car. After lunch, they were treated to a slide presentation by Peter McLachlan in the Reading coach 2012 which had been turned into a Theatre Car. Then it was another train ride and guided tours through the yard before departing at 4:44 for the return trip home. It was a long day but many members came to make the visit a success.

In addition to the New York Transit Museum trip, the Museum hosted a field trip by two of Terri Stramiello's WestConn history classes.

Member Dan Foley made a trip to Canaan, CT to report on the fire damaged Canaan Union Station. Work was progressing to stabilize and secure the undamaged portion. Funds were being raised for the complete restoration. At that time, a number of cabooses were still stored awaiting buyers. Dan also



saw the New York Central & Hudson River Railroad caboose #19322 and felt that it was becoming a "basket case" and didn't "think we would want it..." As we all know, it was eventually donated and Gerry Herrmann and crew are returning it to as it once was.

Steve Gould reported on an excursion he went on with the Sunrise Chapter of the NRHS to East Hampton, his boyhood home. Having boarded the train in Babylon with double decker cars, he traveled the line making stops at several stations along the way. At East Hampton, what was once open grazing land for cows was now built up, blocking the view that Steve once had.

An announcement was made for a membership dinner at the Colorado Brewery. The Library acknowledged a number of donations it had received.

---



# Words from Our President

National Train Day at the DRM was May 12<sup>th</sup> featuring free train rides and an extensive time table of activities. Two birthday parties and event level attendance resulted in a successful one-day event.

The Operation Lifesaver presentation by Don Konen and Steve Gould, operating forge by Bob Pitcher and Glenn Miller, whistle signals with Pete McLachlan, operating turntable with an FL-9 being rotated by Joe LaPorta, 1455 informational presentation with Bob and Maryann Boothe, coupling/uncoupling demonstration by Don Konen, and operating G-gauge by Joseph Alves produced an educational and informative event. It should be noted that the success of this event was due to the high level of commitment and cooperation of our volunteer members.

In addition to those mentioned above, thanks also goes to Mike LaPorta at the turntable; Jeff Van Wagenen, the day's engineer; Jim Teer, conductor; Don Konen, Steve Gould, Pete McLachlan, John O'Hern car hosts; Sue Teer and Dave Lowry with birthdays and Front Desk; Patty Osmer in the Gift Shop; and Dave McKee manning the crossing gate and safety at the rail crossing all day. The event was recorded on film by Chuck Sager, Carolyn Taylor, and yours truly.

**We can accomplish anything we want!**

On behalf of the DRM, Wade W. Roese, President

## *National Train Day at DRM, Continued from Page 1*



Continued on Page 4



## National Train Day at DRM, *Continued from Page 3*

As always youngsters delighted in the play tables and operating layouts. Volunteers were busy greeting guests at the Front Desk and in the Gift Shop. In the "Words from Our President" column on Page 3, Wade has detailed ways that our volunteers contributed to the day's success. The DRM Operations crew had positioned the FL-9 #2013 on the turntable especially for this day. In a change from other years, after arriving at the destination on Track 42, guests disembarked for a chance to experience an informative session at the #1455 steam locomotive. Since there were many children in attendance, those wanting more specific information about steam locomotives and this B & M Mogul were invited to remain after the session or come back after continuation of the train ride. Some guests went back to the consist for a ride back to Track 18, but others chose to continue touring the railyard, then take the short walk back to the point of origination or the Museum building. Tables and benches were under the shelter of Pavilion #2 by Track 42. At the Track 18 platform, members of the train crew were giving demonstrations. The Forge and G-gauge layout were in operation.



Continued on Page 5



National Train Day at DRM, Continued from Page 4





# Outreach Program Prompts Group Tour

By Steve Gould

I asked volunteer Bob Boothe if there was any group he could think of that might enjoy a presentation from the Museum's Outreach Program. Bob put me in touch with Peter Eschweiler, Chairman of "The Group". According to Peter, "The Group is the informal association of retired business and professional men and their wives" that meets several times a month during the fall, winter and spring at the Mt. Pleasant Public Library to hear guest speakers from various fields of interest. One of their presenters was Joe Schiavone, author of several books on the New York Central's abandoned Putnam route.

April was the earliest I could do a talk but that was also the month the library conducted their book sale so The Group's normal meeting room was unavailable. Instead of talks, The Group was looking for a possible field trip destination. I suggested a visit to the DRM and on April 26, 2012, a dozen or so members arrived at the Museum. They were given a ride on RDC #32 and on the turntable. Bob Boothe gave an in-depth talk on #1455 and the cosmetic restoration underway. They stayed far longer at the Museum than most groups due to their interest in our exhibits and the various DRM volunteers who gave guided tours. (Continued on Page 7)



Above, members of "The Group" on the turntable. Photos by Steve Gould. Left and Right, Pete McLachlan with "The Group"; and Below, Steve demonstrating use of the hook, and Bob Boothe educating them about the #1455; photos by Peter Eschweiler.





## Outreach Program Prompts Group Tour, *Continued from Page 6*

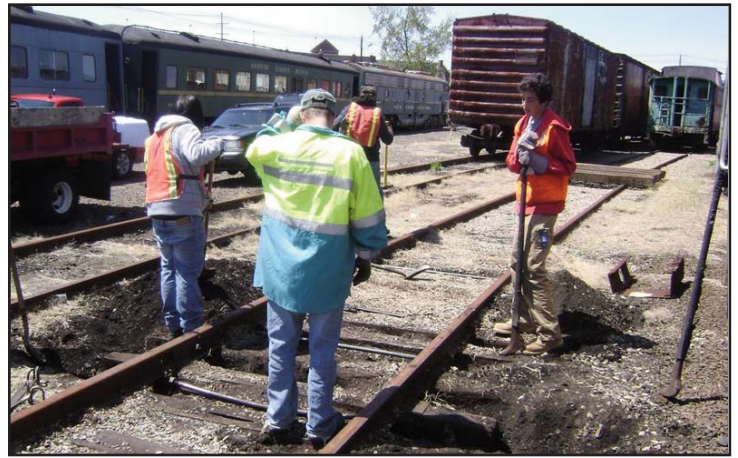
My talk was scheduled for May 11<sup>th</sup>, the day before National Train Day. Since The Group was well informed about DRM from their visit, Peter suggested that since “many of our members are retired businessmen, the business aspects of transportation management would be of interest”. With that in mind, I titled my talk “Railroading from the Shipper’s Side of the Desk”. I spoke about how railroads were used by the two companies I had worked for: Standard Brands Incorporated and Pepperidge Farm. While at Standard Brands, I was Manager of Railway Equipment and I covered the various types of tank cars used by the company. I had gotten permission from Peter to have Jim Malone, the Shippers Car Line sales representative who called on me some 40 years ago, to attend the meeting. Bob Boothe also attended. Also included in the talk was how railroads have evolved from the 1950’s through the Penn Central debacle, the Conrail solution and today’s giants. The talk appeared to be well received and it was a pleasure to represent the Museum before this group.



One photo of Steve giving his presentation and another showing some of the “props” used to illustrate parts of his program. Photos by DRM member Bob Boothe.

## Trackwork Day on April 28<sup>th</sup>

Seven volunteers dedicated their day to help repair and maintain our tracks. Joseph Alves was one of them and took these photos of ties being replaced and a “kink” in a rail joint on Track 38 being straightened. Thank you for your help in this vital way! It is necessary work so that the Museum can use our trackage.





PO Box 90, DANBURY, CT 06813

Address Correction Requested

NONPROFIT ORGANIZATION  
U.S. POSTAGE PAID  
DANBURY, CT  
PERMIT NO. 569

## MUSEUM CALENDAR

- June 6(7:30pm) Maine Central Mt. Div.-DRM Library
- June 13(7:30pm) Video;Unstoppable Trains - Sue Teer
- June 20(7:30pm) Great Railway Journeys: San Diego to Seattle - Bill Brett
- June 21(7:00pm) Board Meeting - Open to Members
- June 27(7:30pm) Slides; Red, White & Blue-1776-1976 -Dan Foley
- July 4 **July 4th holiday- CLOSED**
- July 11(7:30pm) NHRR Again by Requests - Gary Gerske
- July 18(7:30pm) Great Railway Journeys: Austria, Poland, Turkey, South Africa - Bill Brett
- July 19(7:00pm) Board Meeting - Open to Members
- July 25(7:30pm) Video; Colorado Narrow Gauge in Winter - DRM Library
- Aug 1(7:30pm) Electrification of Danb Br - DRM Libr

**Museum hours: Mon-Sat 10-5; Sun 12-5;**

See the newsletter in color at [www.danburyrail.org!](http://www.danburyrail.org!)



New highway sign. Photo by Steve Gould

### Contact Information

Please contact us with submissions:

Mail: The Danbury Railway Museum  
Attention: Newsletter  
PO Box 90, Danbury, CT 06813

Phone: 203.778.8337

Fax: 203.778.1836

Email: [drmnewslettereditor@gmail.com](mailto:drmnewslettereditor@gmail.com)

Editor: Carolyn Taylor

Printing by: Infinity Printing of Danbury

### **Change of Address**

If you move, please send your change of address to:

Danbury Railway Museum,  
Attention: Membership Chairman  
PO Box 90, Danbury, CT 06813  
Via Email to [drmmembers@aol.com](mailto:drmmembers@aol.com)