

# The Railyard Local

Volume 8, Issue 3

-The Monthly Newsletter of the Danbury Railway Museum-

May 2009

## Many Greet the Easter Bunny

Our Easter Bunny much preferred the accommodations of our heated, specially decorated CN 0660 party car and all the delightful visitors to living in a rabbit hole! For two weekends in April the bunny had a grand time greeting guests of all ages, along with a helper who passed out candy and coloring books.



Alas, our bunny will have to find another place to stay until arriving here next spring! The DRM also featured additional attractions, including the very popular "Zooky" the clown, who also turned balloons into magical creations.

Children acquired temporary tattoos, colored, operated model layouts, and had a great time creating consists of their own at the play tables. As a result of finished trackwork, passengers on our vintage Budd car traversed the railyard and back before debarking to visit our bunny and the other historic equipment displays outdoors. On-line ticket reservations worked well, and the event was a success for the Museum as well as for our guests, despite some inclement weather. Many thanks to all the volunteers who prepared for and staffed this event!



Continued on Page 4

## In This Issue

- ~ Joint RR Presentation May 31<sup>st</sup> - Page 2
- ~ DRM Annual Financial Report - Page 5
- ~ Outreach Spans the Ages - Page 6
- ~ Recognizing 2008 Volunteers - Page 7
- Plus . . . DRM Express Track and New Members

## Pumphouse Progress

Thanks to some donations and temporary transfer of funds from another budgeted area, the Museum was able to replace the roof on the former Segar Street Pumphouse. This was the necessary first



step toward its further restoration. More donations are needed to replace the borrowed funds, and then to enable further restoration, so if you can help, please send a donation indicating it is for the Pumphouse. This is not an expensive restoration; a

little money will go a long way. Under the leadership of John Ivansco, volunteers have almost finished positioning the pump and motor, and have installed wiring for lighting, awaiting a source of electricity.

## Summer Hours and Events

Busy season ahead & open 7 days a week

### New Summer Hours:

Beginning Monday, May 25<sup>th</sup> - Monday, September 7<sup>th</sup>, the Museum will be open Monday - Saturday 10-5pm; Sunday 12-5pm.

*Memorial Day, May 25* - Open with train rides.

*June 13* - *Owney, the Railway Post Office Dog Day*

The Museum will honor Owney, the famous RPO dog with special stories, history, and children's activities in addition to usual attractions and train rides.

# New Members

We are delighted to welcome our new members this month. All members, as well as the general public, are welcome to attend the weekly meetings and free programs held Wednesdays, 7:30pm, at the Museum, 120 White Street, Danbury. We invite all members to become involved in Museum activities as soon as possible!

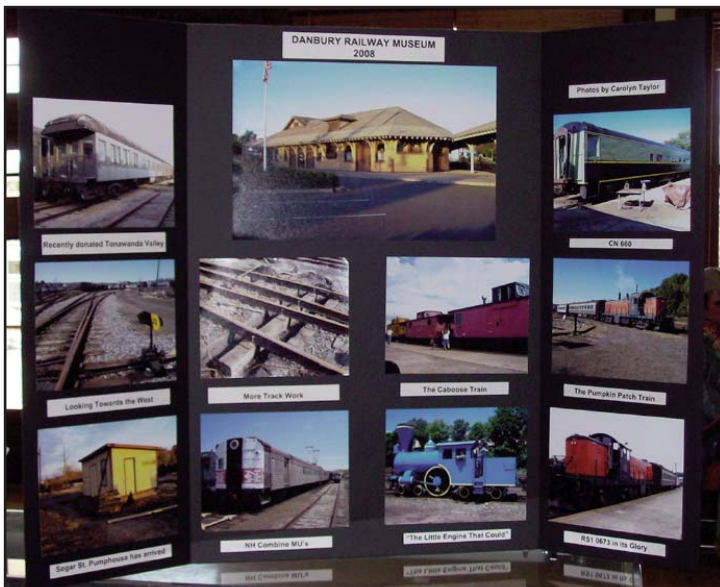
- |                 |                |
|-----------------|----------------|
| Paul Kirsch     | Redding, CT    |
| Leo Brosnan     | Newtown, CT    |
| Chris Conrad    | Newtown, CT    |
| Joseph Alves    | Danbury, CT    |
| Alan Stock      | Bethel, CT     |
| Daniel Smuckler | Ridgefield, CT |
| David Tinagero  | Brewster, CT   |

# Ten Years Ago

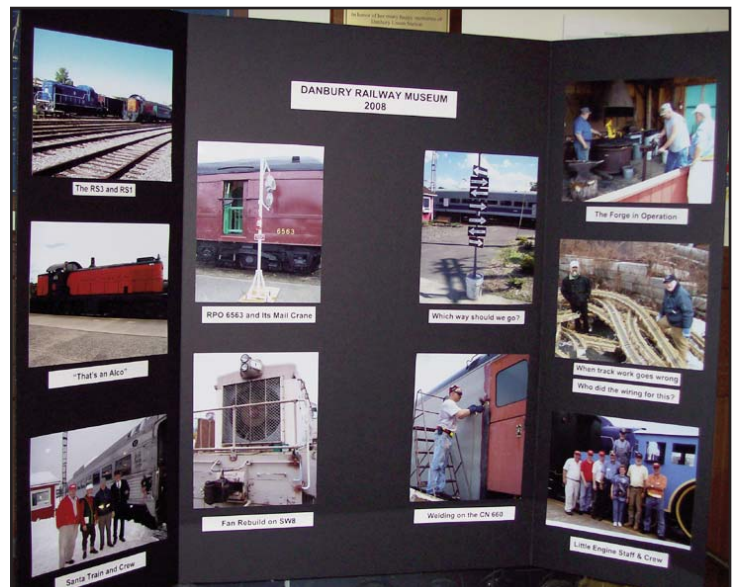
By Stan Madyda

Due to space limitations in this month's newsletter, I'll begin looking at the forming of the DRM next month.

As for 10 years ago, with the purchase of the B&M 1455, preparations were underway to move it by rail over 200 miles to Danbury. Moving it by flatbed truck was considered but the cost of hiring cranes and height restrictions on the highways made rail the best option. Members from the DRM, along with steam engine consultant J. David Conrad, traveled to Wareham, MA to evaluate the engine. The tender would need the most work since years of rust would have to be addressed. The engine was well taken care of, with rust preventative in place, as well as plenty of



Before "Big E" DRM President Ira Pollack once again created a colorful display from photos showing activities and progress at the DRM during 2008. (Also photo opposite)



oil and grease. Still railroads were (and still are) reluctant to move very old pieces with friction bearing trucks. The railroads involved with the move had certain requirements that needed to be met. The cost of the move was estimated to be \$15,000.

Restoration continued in the yard on a number of projects including the Budd car, the double ended crane, cabooses, the scale test car and the box car for the carpenter shop. Near completion was the New Have gondola with Ira Pollack finishing the lettering.

Member profiles were for Andy Salamon and Chris Blackman.

Another excursion was in the works for June 12th, going to the Hudson River with stops at Peekskill, Cold Spring and Poughkeepsie. An optional river cruise and tour of West Point also were included.

Plans were also in the works with the Danbury Garden Club so that they could hold their annual flower show at the DRM on May 22-23, with proceeds to be split between the two organizations.

# Joint RR Presentation May 31<sup>st</sup>

By Stan Madyda

The Bethel Historical Society and the Danbury Railway Museum will present "Railroading In and Around Bethel" on Sunday, May 31, 2009 at 2pm. at The Second Meeting House, 40 Main Street, Bethel, CT.

Guest speakers will be Peter McLachlan and Robert Devine. Peter McLachlan, a retired NY, NH & H RR engineer will talk about his experiences on the railroad and present slides on railroading. Robert Devine will talk about his experiences working as a teenager on the Shepaug Railroad (then the NY,NH & H RR) doing track maintenance.

Railroad memorabilia will be on display.

- 2 Refreshments will be served.
- A donation of \$5.00 is recommended.

# DRM Express Track

By Ira Pollack, President

In this month's report I'd like to update you on some of the things going on at the Museum. In the building, we've opened up new exhibits in the Great Room. One features the photographic talents of Dan Foley, with over sixty pictures Dan shot in his travels throughout the country in the 1950's and 60's. Also, we have begun displaying beautifully done sketches and drawings by member Harry Burke. It is great to see our members coming forward and displaying their workmanship and artistry for all to see. Please come visit the building and enjoy the creativity and history shown in the exhibits of these two members.



I also would like to thank Sue Teer and all of our volunteers who participated in our annual Easter Bunny event. Although the weather did not cooperate, we had an excellent turnout of visitors with many happy faces showing enjoyment on the two weekends. This has turned into one more successful, traditional annual event that we do.



In case you had not noticed, the operating season has begun once again in the yard, and as usual we have our work cut out for us. We have begun regauging sections of Track 42, and tamping various areas that have settled and need attention. I am hoping to be there on Saturdays starting at about 10am, and would certainly appreciate any help that you can afford.

In other news, John Ivansco and crew are busy working on the pumphouse at the far eastern portion of the yard. To date the roof of the building has been replaced and they have positioned the original pump and motor in their appropriate position. John plans on replacing the windows and has begun the restoration of the double doors. Much work remains, but we are out of funds. Any monetary help would certainly be

appreciated in this project. Eventually I envision a platform in this area for loading and unloading our Railyard Local.



Since this is our 15 year anniversary, I would like to share some early stories with you on the DRM's history – hopefully on a monthly basis. When we first began, we would meet on Wednesday evenings in a storefront that we leased on Ives Street. There were many people attending these meetings - so many that the meeting attendees would spill out on to the street. One evening a police car stopped to find out why we were loitering around. Was he surprised when we told him who we were, and what was going to happen over the next several months at the railroad station! It was a time of planning and great expectation. Would this really happen? Every Wednesday we would get a weekly report: the floor is gone this week, they are having trouble matching the color of the brick, now the south wall is down, now they have pulled up the roof. I will be honest; at one point I did not think that it would turn in a reality. I felt that the builders would certainly give up on this huge project. Boy was I wrong! It was at these meetings that the comradary was formed. It was meeting this woman who began selling DRM coffee mugs in front of the group and announcing, "Guess what we have this week: New Haven T-shirts!" That was the informal beginning of our Gift Shop, with Sue Thomas (Teer) trying to raise monies for our fledgling organization. It was a great time for us all. Look at what was ahead of us. The days passed into months, and finally we were set to move into the newly restored building. Everyone pitched in to help with the move to our new home. Our biggest fear at the time was "The Muffin Lady", but that will be next month's story of our history. I am very proud of what we all did back then, but I also hope that we continue that growth into our future.

I will be looking forward to seeing you at the Museum, hope that you can be involved in what we do, and become part of our history.

Many Greet the Easter Bunny, *Continued from Page 1*



# DRM Annual Financial Report

By Patty Osmer, DRM Treasurer

## GENERAL OPERATING FUND RESULTS AS OF 12/31/08

The General Operating Fund is what is used to pay the Museum's day-to-day bills. Each January, a balanced budget is approved by the Board of Directors. Income above and beyond normal operating expenses is budgeted to be put into Asset Restoration, Maintenance, and Improvements.

<b>INCOME:</b>		<b>% of Income</b>
Events	70,829	(40.34%)
General Admission	53,174	(30.28%)
Sales(less cost of goods)	26,532	(15.11%)
Membership	12,825	( 7.30%)
General Contributions	6,747	( 3.84%)
Interest Income	3,236	( 1.84%)
Other	2,250	( 1.28%)
<b>GROSS PROFIT:</b>	<b>175,593</b>	

The Museum also realized approximately \$93,000 from the sale of scrap metal.

<b>EXPENSES:</b>		<b>%of Expenses</b>
Utilities (gas, electric)	35,513	(21.82%)
Advertising	17,429	(10.71%)
General Maintenance	20,183	(12.40%)
Event Expense	22,518	(13.84%)
Asset Restoration/Preserv.	10,200	( 6.27%)
Insurance	14,052	( 8.64%)
Locomotive Operations	13,475	( 8.28%)
Accounting/Legal	8,689	( 5.34%)
Other Miscellaneous	7,902	( 4.86%)
Printing/Publications/Postage	4,364	( 2.68%)
Credit Card Fees	3,399	( 2.09%)
Equipment Rental	2,728	( 1.68%)
Telephone	2,274	( 1.40%)
<b>TOTAL EXPENSES:</b>	<b>162,726</b>	
<b>NET ORDINARY INCOME</b>	<b>12,867</b>	

Approximately \$10,000 was carried over to 2009 Asset Restoration.

## TEMPORARY RESTRICTED FUND BALANCE AS OF 12/31/08

Temporary Restricted Funds are accounts where monies have been earmarked for a specific purpose. The majority of money in these funds comes from donations or grants.

<b>INCOME 2008:</b>	
Donations	3,894
Grants	3,000
<b>TOTAL INCOME</b>	<b>6,894</b>
<b>EXPENSES 2008:</b>	
<b>Temporary Restricted Fund Expenses</b>	<b>5,634</b>
<b>NET TEMP RESTRICTED FUND 2008:</b>	<b>1,260</b>

## FUND BALANCES AS OF 12/31/08:

1402 RS-11 locomotive	10,975
1455 Boston & Maine steam locomotive	10,907
44-Tonnners brakes	216
44-Tonnners - other	1,060
Engine repair	500
HO layout	120
Other layouts	100
Library	10,476
Meserve - N gauge	700
Meserve - Technology	1,455
NH box cars	803
NH caboose roofwalk	1,000
NYCHRR wooden caboose	6,160
RCD	6,359
RPO	1,011
Rutland	3,238
Shop	300
Tamper	975
Temporary misc.	175
Track	2,756
Turntable	5,000

**BALANCE:** **64,239**

# Outreach Spans the Ages

Submitted by Steve Gould

DRM Secretary Steve Gould has continued the Museum's Outreach Program by making two presentations since the first of the year. On January 14, he spoke to the Danbury Men's Club. He covered the early history of railroads in Danbury as well as the



general classes of "steel wheel on steel rail" from the major freight carriers to Amtrak to light rail systems. As is his custom with presentations, he also made sure the audience heard about the Museum and its various events, passing out the latest brochures and calendars. The talk was well received.

On April 20<sup>th</sup>, I visited Bedwell Elementary School in Bernardsville, NJ to give a presentation on railroads to my granddaughter Alison's Kindergarten class. A total of 20 children attended. The teacher, Ms. Jongema, had the kids seated on a carpet in front of a tv monitor so they would be able to clearly see a video I had prepared to accompany the talk. I got some pointers from a former Kindergarten teacher who was in my high school graduating class; what she told me to do paid off as I had the kids' complete attention. It was a basic presentation with the video to provide visual examples of what I was telling them. For instance, a video of a mixed manifest freight train allowed me to show types of freight cars; the passing



of Amtrak's Silver Meteor showed examples of sleeping cars, dining cars, coaches and the like. I showed examples of locomotives, and when I had a sequence of Thomas the Tank Engine from our Museum event in 2001, I got a big cheer. When a piggyback train was



shown, several kids pointed out the UPS trailers on the flat cars. Another surprise was when I asked for hands of those who had ridden a train, all went up except for one child's. After the presentation, which lasted 30 minutes including the 17 minute video, I passed out coloring books.

*Many Greet the Easter Bunny, Continued from Page 4*



# Recognizing 2008 Volunteers

By Patty Osmer

As we mark the 15th year of the Danbury Railway Museum, we would like to give each and every one of our volunteers a huge THANK YOU! By far, our volunteers are our most valuable asset, and we could not maintain the Museum without each and every one of you. Whether you can give 2, or 2,000 hours, every one of you makes a difference. While we know that not every volunteer records his or her hours (and of those that do, we know that many of you give more hours than you record), the recorded hours for 2008 showed that 58 volunteers donated over 11,000 hours to the Museum. We know that our volunteers are out there, but unfortunately, many of you are not recording your hours.

a volunteer log, either at the Front Desk, the Library, the Office, the Crew Trailer, or with the Project Manager. Or, you can just write your hours on a sheet of paper. However you record your time, just leave a copy of your hours for the month in the Volunteer Hour Mail Box in the Office. Please note the project you worked on, or if you worked on the restoration of a specific piece of equipment, please note that also. If you have any questions, Patty Osmer or Jerry Lawlor will be happy to answer them.

Again, thank you all for helping us to restore and maintain a vital part of our history. We couldn't do it without you! And PLEASE, PLEASE ... help us out by recording your hours!

Thanks go to Jerry Lawlor for his conscientious work of entering the recorded volunteer information into the computer in an organized fashion.



At left: Dan Pawling sent this photo of Sue Teer and Jerry Lawlor in Greenwich on behalf of the Museum at the Westchester Model RR Club's Annual Spring Train Meet in March. At right: Julie Theaman welcomes guests with her warm smile as she volunteers in the Gift Shop during the Easter event.



Those with over 800 recorded hours were: Ira Pollack, Pete McLachlan, Dave Lowry, John O'Hern, and Patty Osmer.

Others for whom we have recorded hours were: Joseph Alves, Bob Andriola, David Barboza, Frances Barboza, Bob Bell, Ed & Suze Blackman, Bob Booth, Bill Britt, Harry Burke, Don Collier, Al Emanuele, John Fegley, Dan Foley, Franz Gerencir, Steve Gould, Dean Harte, Nanci Hennessey, Gerry Herrmann, Ed Holowinko, Ron Huppert, Don Konen, Dave Kopycinski, Dana Laird, Eleanor Langham, Jerry Lawlor, Michael Madyda, Stan Madyda, Andrew Manna, Desmond McCann, Tom McCullough, Howard Peatfield, Robert Pitcher, Jim Poor, Jeremy Rice, Danielle Ridulski, Dave Rist, Wade Roese, Marty Scatola, Richard Shaboo, Dave Simington, Dan Stoller, Carolyn Taylor, Jim & Sue Teer, Jeff Van Wagenen, Joe Ward, Bob Westerfield, Kenn Williams, Dave & Carol Wilson, and Carl Zencey.

We know that many other volunteers should be on this list, but unless you give us your hours, we can't record them!

In order to keep track of volunteer hours (which are often required for grants) the Board of Directors is asking everyone who volunteers to fill out

## We Appreciate the Donations!

By Patty Osmer

The Danbury Railway Museum gratefully acknowledges the following for their 2008 donations to the Museum. If you donated but we do not have your name listed, please accept our apologies and be assured that we appreciated your donation. Each donor should have received a letter of acknowledgment, so if some reason you have not, please contact us.

Roberta Ballard, Kent Boots, Bill Britt, Julius Brooks, Gregory Caron, R. Ross Chapin, Jr, Theodore Cleveland, Ken Erdmann, Clarence Gardiner, Steve Gould, Christine & Raymond Gustafson, Sean Harte, Roger Hines, Peter Hoffner, Daniel Jowdy, Michelle Keller, Stephen Kochiss, Tom McCullough, Dave McKee, Kensiton Merrill, Daniel Milone, Britt Moreton, Patty Osmer, Daniel Pawling, Dave Roberts, Michael Roche, Darrell Shabin, Nancy Sniffen, James Stevenson, John Stottle, Frank Thompson, Jeff Van Wagenen, Joe Ward, No White Plains Fire Dept ( in Memory of Clarence Gardner), Hawley School, Akzo Nobel Surface Chemistry



PO Box 90, DANBURY, CT 06813

NONPROFIT ORGANIZATION  
U.S. POSTAGE PAID  
DANBURY, CT  
PERMIT NO. 569

## MUSEUM CALENDAR

May	20(7:30pm)	Lehigh Hudson River - Pete Brill
May	21(7:00pm)	Board Meeting - Open to Members
May	27(7:30pm)	Video; Auto Train - Steve Gould
June	3(7:30pm)	Slides; Lehigh & N. E. - Pete Brill
June	10(7:30pm)	Puffin Billy; Australia N.G.- Bill Brett
June	17(7:30pm)	Slides; New England - Gary Gurske

**Museum hours:** Wednesday-Saturday 10-4pm; Sunday 12-4pm

**May 25 - Sept 7: Monday-Saturday 10-5pm; Sunday 12-5pm**

See the newsletter in color at [www.danbury.org/drm!](http://www.danbury.org/drm!)



## Contact Information

Please contact us with submissions:

Mail: The Danbury Railway Museum  
Attention: Newsletter

PO Box 90, Danbury, CT 06813

Phone: 203.778.8337

Fax: 203.778.1836

Email: [newsletter@danburyrail.org](mailto:newsletter@danburyrail.org)

Editor: Carolyn Taylor

Printing by: Infinity Printing of Danbury

### Change of Address

If you move, please send your change of address to:

Danbury Railway Museum,

Attention: Membership Chairman

PO Box 90, Danbury, CT 06813

Via Email to [drmmembers@aol.com](mailto:drmmembers@aol.com)

